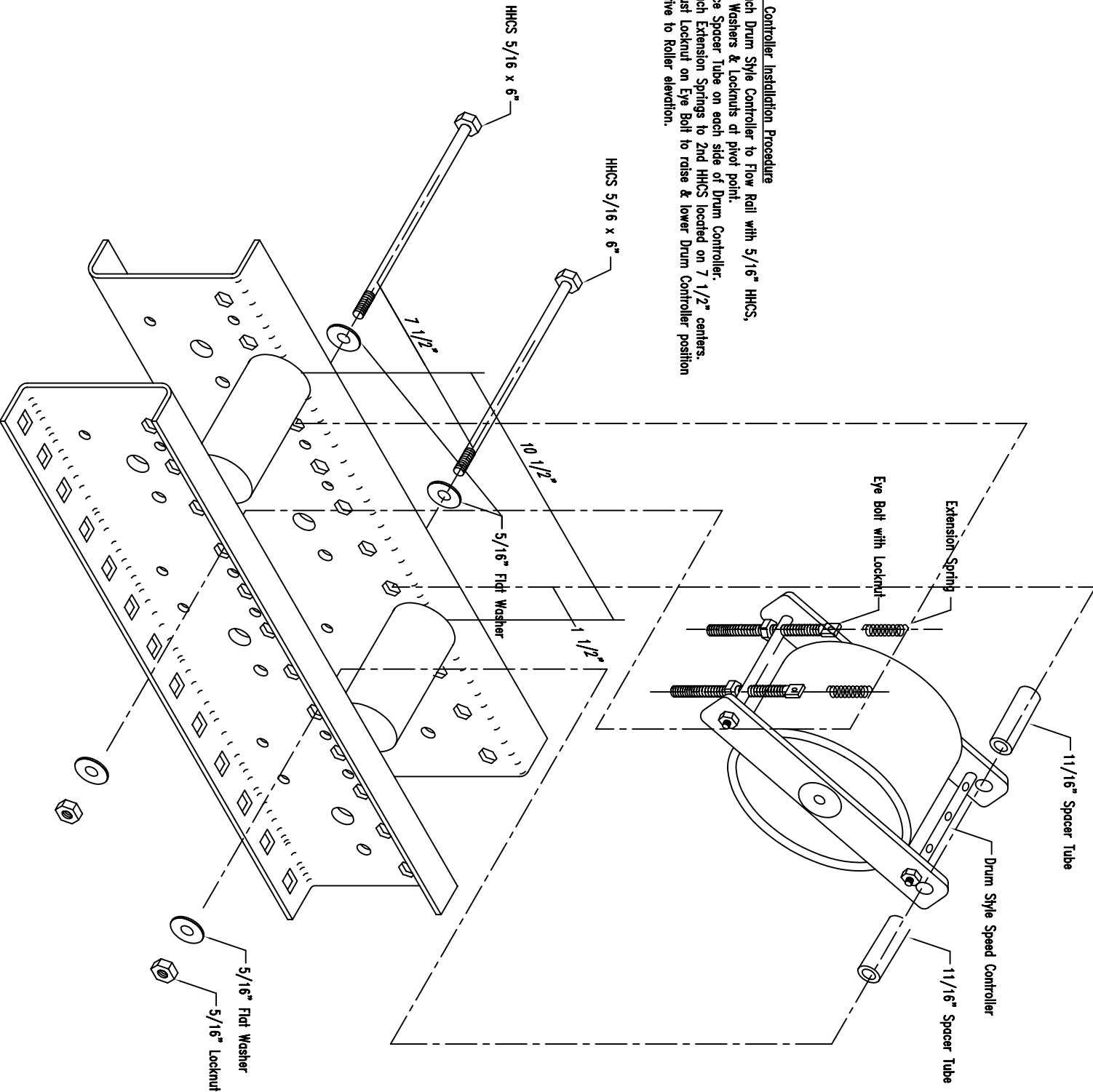


- Speed Controller Installation Procedure**
1. Attach Drum Style Controller to Flow Rail with 5/16" HHCS,
 2. Place Spacers & Locknuts at pivot point.
 3. Attach Extension Springs to 2nd HHCS located on 7 1/2" centers.
 4. Adjust Locknut on Eye Bolt to raise & lower Drum Controller position relative to Roller elevation.



Speed Controller Assembly Detail